

Brands
of the year
Award
IT'S ALL ABOUT CHAMPIONS

5 Layer Technology Dura Tanks

Food Grade Material Layer and Anti-bacterial Inner Layer
External Toughened Layer
Ultra Violet Protection
Puff Tuff Layer



Huge
Storage
Capacity



Affordable
price



Weather
Proof



Anti
Microbial



Maintenance
Free



UV
Stabilize
Material



Insect Proof
Threaded
Lid



Heavy
Duty



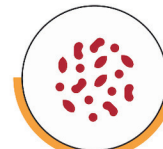
Eco
Friendly



Made with
Advance
Technology

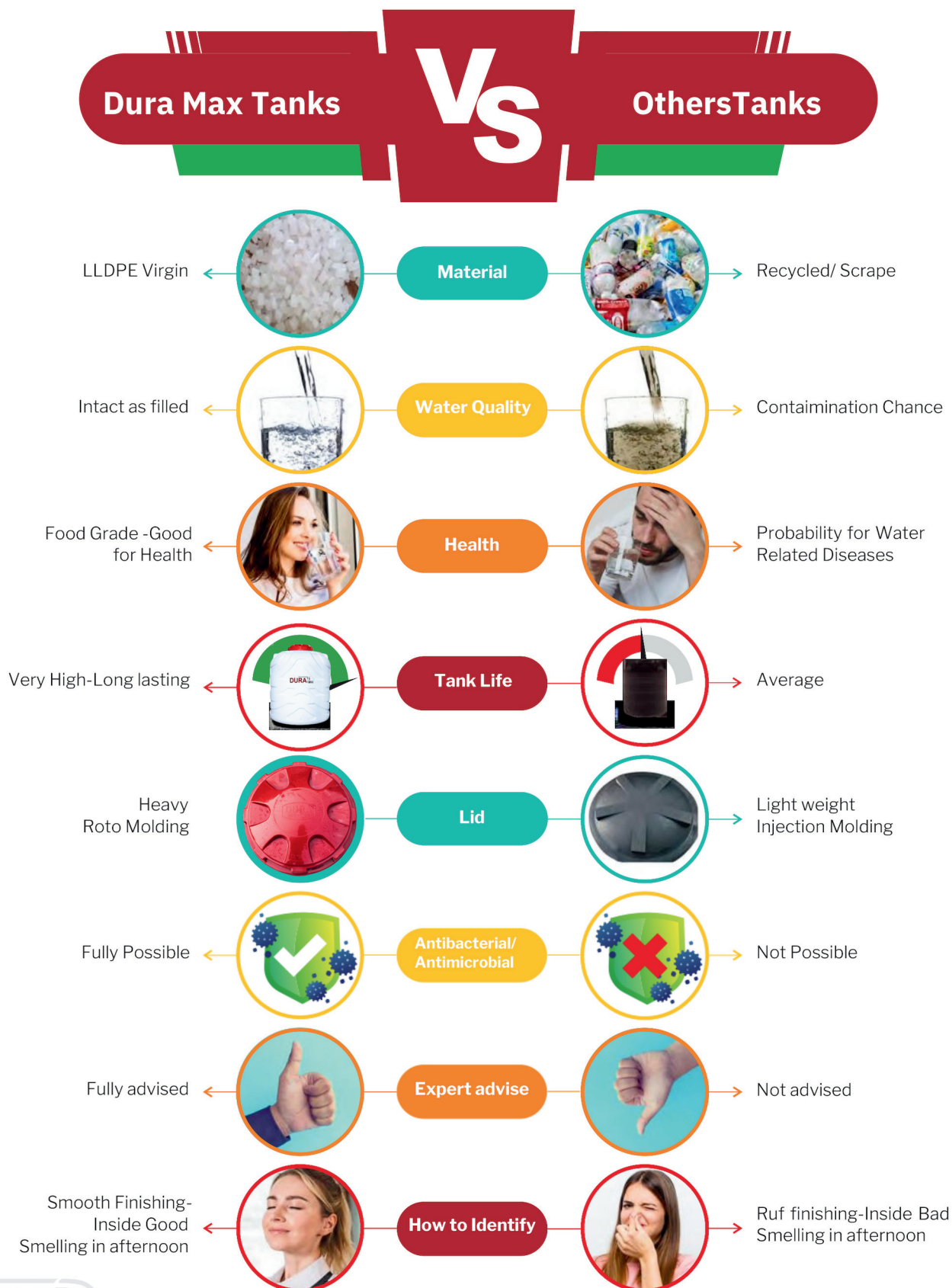


Life long
and
Durable



Food
Grade
Material

WHY DURA MAX WATER TANKS



BLUE



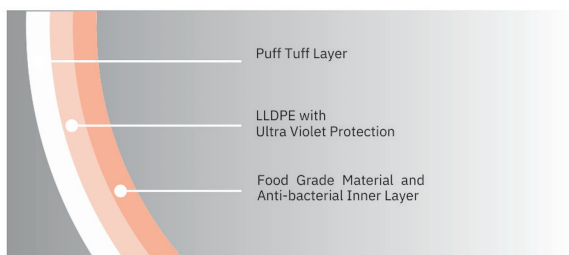
Dura Max water tank range consists of 5 layered walls and 125 Ltrs to 2500 Ltrs. Storage capacities.

Roto Tank Colours available in Black, Blue, and Green. All-Weather Resistant 100 % virgin, food-grade plastic inner layer Specialized on-bio-organic treatment Muscular Rib Design Easy-lock Lid.

BLACK



Available in
125 / 150 / 200 / 250 / 500
/ 550 / 750 / 1000 / 2000 /
1500 / 2500 Ltr



GREEN



ROTO VERTICAL TANKS DIMENSIONS

125	31.5	34
150	38	34.5
200	52	35
250	44	43.5
300	49.5	44
400	59	45
500	68	48
1000	72	72
1500	94	72
2000	96	79
2500	124	83.5

LOFT WATER TANKS DIMENSIONS

2 x 3	67	253
2 x 4	90	340
2.5 x 4	112	423
3 x 4	135	510
2.5 x 5	140	529
3 x 5	169	638
3 x 6	202	763

ROTO HORIZONTAL TANKS DIMENSIONS

200	3.9	35.5	56.5
300	4.1	36.5	63

کنکریٹ جیسا مضبوط



BLOW VERTICAL TANKS DIMENSIONS

500	1044	800
600	1131	900
750	1195	980
1000	1305	1080
1200	1387	1150
1500	1462	1250
2000	1661	1350

BLOW HORIZONTAL TANKS DIMENSIONS

500	805.5	1393.5	780.5
600	805.5	1615.5	780.5
750	861.5	1726.5	835
1000	928.06	1875.65	928.06



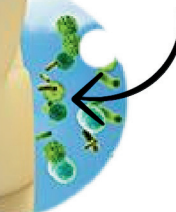
Maintain Temperature



Better Visibility Inside



Protection against bacterias

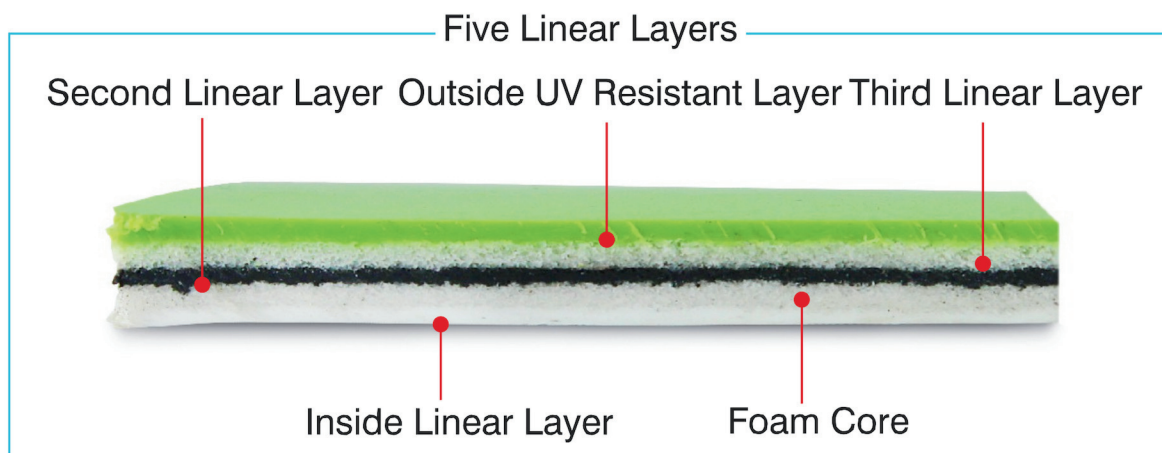


- Lightweight and Durable
- Maintenance Free
- Free from algae formation



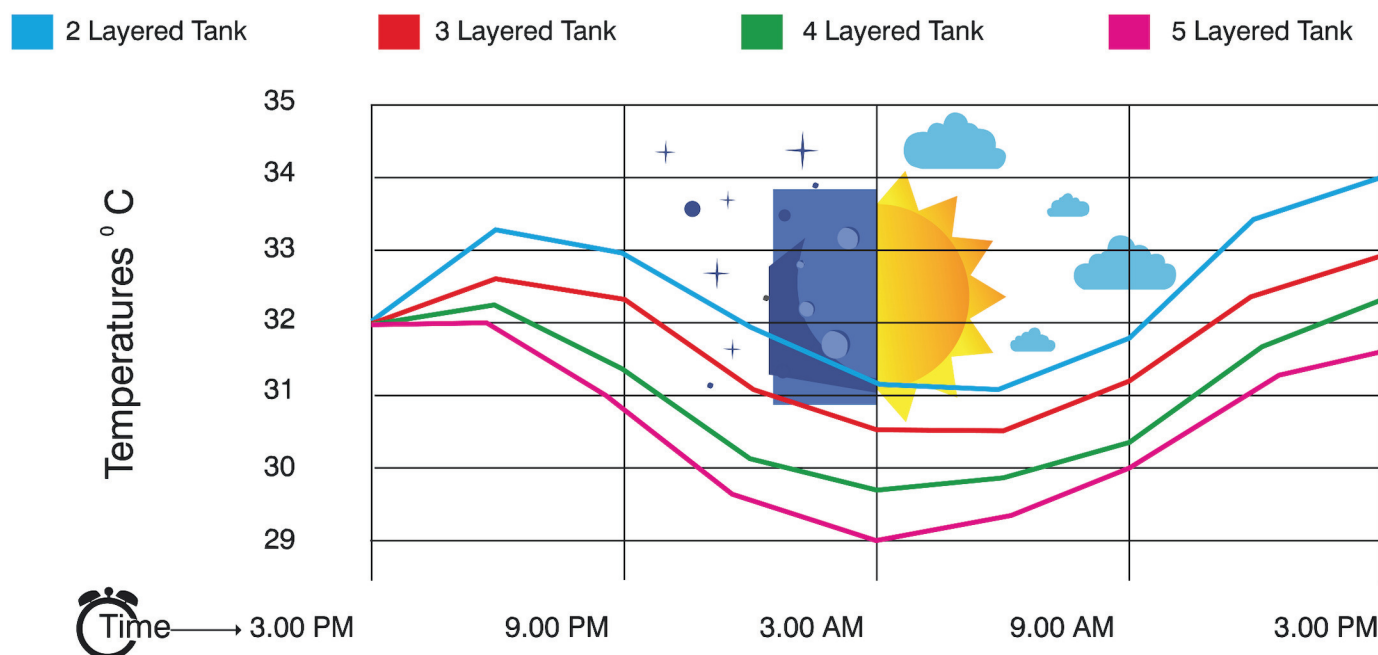
INSTRUCTIONS FOR INSTALLATION

- The tank base should be placed on a rigid, strong, level and flat base.
- Pipelines, valves and other fittings should be properly aligned.
- Check the nuts that connect the tank to the nipple.
- Nuts must be used with rubber gaskets and should not be over-tightened.
- The tank should be properly cleaned with detergent on the inside before being used.



Convenient Cooling

Water in polyethylene tanks often get over-heated in summer. **DURA Max Tanks** have a layer of foam within the layers of polyethylene. Being a non-conductor of heat, the layer of foam, keeps your water cool even at the peak of summer.



*We Believe
in a World That
Lasts Forever*



100% ECO-Friendly
& Recyclable



Weather
Resistant



Longevity



UV Resistant